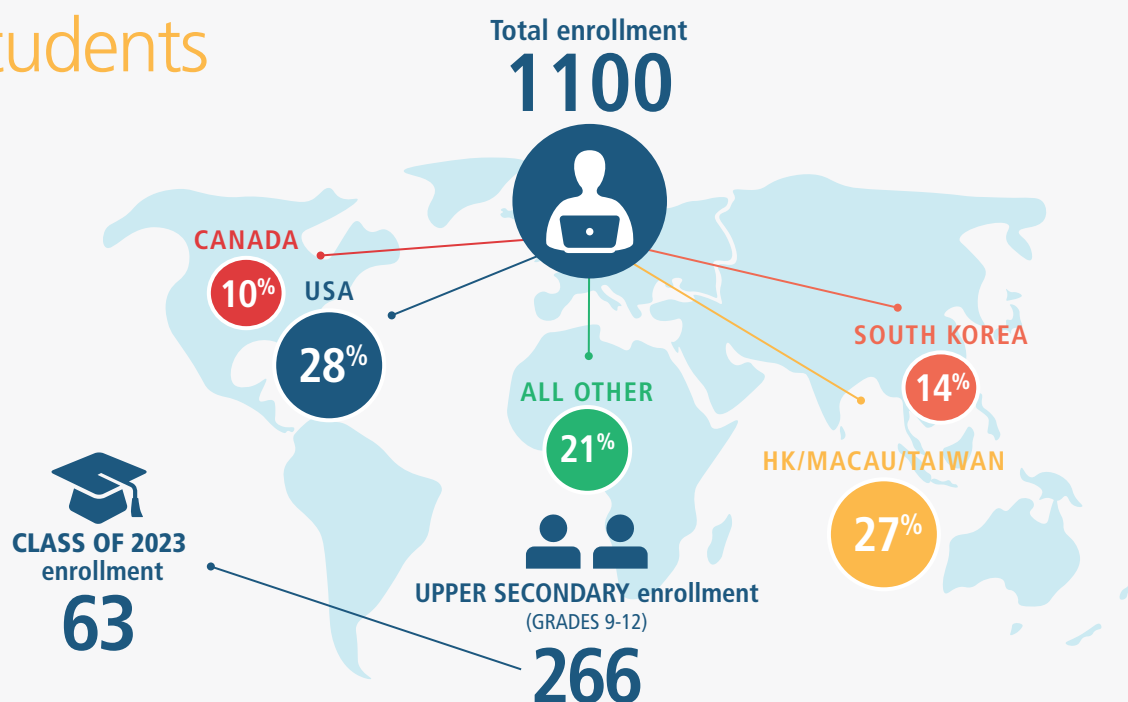


# Upper Secondary Profile for University Applications

## School and Community

Founded in 1981, the **American International School of Guangzhou (AISG)** is the oldest international school in South China. AISG is an independent, non-profit, co-educational day school offering a university preparatory curriculum in English for foreign children. All students graduate with an accredited AISG High School Diploma. As an inclusive school, we are committed to successfully serving students representing a full range of learning styles. As such, we support all students who wish to attempt the full IB Diploma Programme.

### Students



### Faculty



# Graduation Requirements

Subject Area	Required Credits
English	4 credits
Mathematics	3 credits
Individuals and Societies	3 credits
Science	3 credits
Health and Physical Education	2 credits
Fine Arts	1 credit
World Languages (2 consecutive years of the same language)	2 credits
Electives	6 credits
<b>TOTAL</b>	<b>24 CREDITS</b>

Please note: AISG does not tick rating boxes on application forms, nor do we report class rank.

As part of the university applications process, we disclose cases of academic dishonesty and serious disciplinary infractions to institutions which require this information.

## IB Diploma average score by subject 2022

		AISG Average	World Average	Number of Candidates
GROUP 1	English A Language & Literature HL	5.62	5.02	26
	English A Language & Literature SL	5.20	5.26	15
	English A Literature HL	5.75	4.73	4
	Chinese A Language & Literature HL	5.70	5.78	10
	Chinese A Language & Literature SL	5.50	5.74	8
GROUP 2	French B HL	7.00	5.38	1
	French B SL	7.00	5.12	1
	Mandarin B HL	5.50	6.28	2
	Mandarin B SL	6.33	5.80	9
	Spanish B HL	6.00	5.55	1
	Spanish B SL	5.80	5.04	5
	Spanish AB SL Pamoja class not included	5.25	5.05	4
GROUP 3	Economics HL	5.42	5.39	18
	Economics SL	4.80	5.01	5
	History HL	5.83	5.29	6
	History SL	4.50	4.76	2
	Psychology HL	5.08	5.07	13
	Psychology SL	5.64	4.79	11
GROUP 4	Chemistry HL	6.21	4.98	14
	Chemistry SL	5.38	4.54	8
	Computer Science HL	4.60	5.25	5
	Computer Science SL	6.33	5.10	3
	Environmental Systems & Societies SL	5.44	4.46	9
	Biology HL	5.46	4.73	13
	Biology SL	5.75	4.56	8
	Physics HL	5.67	5.09	3
	Physics SL	6.00	4.64	1
GROUP 5	Mathematics Analysis & Approaches HL	6.67	5.21	6
	Mathematics Analysis & Approaches SL	6.20	4.99	20
	Mathematics Applications & Interpretation SL	5.26	4.39	19
GROUP 6	Music HL	5.75	5.03	4
	Music SL	5.00	4.71	1
	Theatre HL	6.50	4.96	2
	Visual Arts HL	5.50	4.44	6

## Administrators

**Kevin Baker**  
Director  
kbaker@aisgz.org

**Amos Lyso**  
Principal  
alyso@aisgz.org

**Matthew Wood**  
IBDP Coordinator  
mwood@aisgz.org

**Alan Cheung**  
University Counselor  
acheung@aisgz.org

## COVID-19 Updates

AISG shifted to online learning between January to May 2020. Most of the semester took place synchronously while many of our students and faculty remained outside of China for months. All students had the option to report their progress as a Pass/Fail statement of credit earned for Semester 2. Students have returned to on-campus learning since August 2020.

## Accreditations



## Memberships



## AISG Course Offerings 2022-2023

### ENGLISH

Learning Support  
English as an Additional Language  
English 9  
English 10  
English B HL  
IB English Lang & Lit HL/SL  
IB English Literature HL/SL  
Journalism

### WORLD LANGUAGES

Spanish Intermediate/Advanced  
French Intermediate/Advanced  
Chinese Emergent/Intermediate/Advanced  
IB French ab initio SL  
IB Mandarin ab initio SL  
IB Spanish ab initio SL  
IB Spanish B HL/SL  
IB French B HL/SL  
IB Mandarin B HL/SL  
IB Chinese A Language & Literature HL/SL  
IB Korean SL SSST  
IB Japanese SL SSST

### SOCIAL STUDIES

Social Studies 9  
Social Studies 10  
IB History HL/SL  
IB Economics HL/SL  
IB Psychology HL/SL

### SCIENCE

Integrated Science 9  
Integrated Science 10  
IB Computer Science HL/SL  
IB Env Sys & Soc SL

IB Biology HL/SL

IB Chemistry HL/SL

IB Physics HL/SL

### MATHEMATICS

Integrated Mathematics 9  
Integrated Mathematics 9 Extended  
Integrated Mathematics 10  
Integrated Mathematics 10 Extended  
IB Mathematics:  
Analysis and Approaches HL/SL  
IB Mathematics:  
Applications and Interpretations SL

### FINE ARTS

Choir  
Filmmaking  
Graphic Design  
Music Technology  
Performance Theater  
String Ensemble  
Studio Art 2D  
Studio Art 3D  
Wind Ensemble  
Yearbook  
IB Visual Arts HL/SL  
IB Music HL/SL  
IB Theater HL/SL

### OTHER

Fit 4 Life  
Grade 9 PE/Health  
Grade 10 PE/Health  
IB Theory of Knowledge  
Introduction to Computer Programming:  
Robotics  
Pamoja Online Courses

*In Grades 11 and 12, all classes are taught as IBDP classes. This includes classes for students who are not pursuing the IB Diploma. To earn the IB Diploma students must follow an approved programme of courses distributed among six IB groups. Three of these courses must be taken at higher level (HL). IB Diploma candidates must research and write a 4,000-word Extended Essay and complete the Theory of Knowledge course and the Creativity, Activity and Service (CAS) programme. Individualized learning options are available to satisfy the AISG High School Diploma requirement.*

## AISG IB Diploma Results 2020-2022

	CLASS OF 2022	CLASS OF 2021	CLASS OF 2020	WORLD MAY 2022
# of Students in Cohort	46	49	65	-
# of IB Diploma Candidates	43	42	59	88,330
% of IB Diploma passes	100%	95%	93%	86%
% with 35+ points	49%	64%	53%	-
Average diploma total	36	37	36	32
Highest Score Out of 45	43	43	45	-
% of bilingual diplomas	40%	33%	29%	28%

## Class of 2023: Quintiles

QUINTILE	NUMBER OF STUDENTS	WEIGHTED GPA RANGE
1	12	3.87-4.14
2	13	3.55-3.84
3	12	3.33-3.53
4	13	2.96-3.32
5	13	2.05-2.94

## AISG Grading System

LETTER GRADE	POINT VALUE	IBHL POINT VALUE
A+	4.3	4.8
A	4.0	4.5
A-	3.7	4.2
B+	3.3	3.8
B	3.0	3.5
B-	2.7	3.2
C+	2.3	2.8
C	2.0	2.5
C-	1.7	2.2
D+	1.3	1.8
D	1.0	1.5
D-	0.7	1.2
F	0	0

*IBHL classes taken in Grades 11 and 12 are weighted for calculating cumulative GPA.*

## SAT Reasoning Test

	MIDDLE 50% SCORE RANGE		
	READING & WRITING	MATH	COMPOSITE
2022	560-700	610-740	1150-1420
2021	550-670	610-750	1150-1390
2020	560-700	620-770	1200-1460
	MEAN		
	READING & WRITING	MATH	
2022	632	666	
2021	612	674	
2020	640	693	

*Scores include non-native English speakers.*

# University Acceptances 2020-2022

Limit on applications: AISG supports up to 10 applications worldwide.

Universities who receive an application from AISG can be assured that the student is a serious applicant.

Universities listed below are based on what has been reported to date and may exclude acceptances and matriculations that are still in process for the Class of 2022, typically Australia, Europe and South Korea.

Universities with at least one enrolled AISG graduate appear in **bold type**.

## AUSTRALIA

University of Sydney

## CANADA

Bishop's University  
Brock University  
Concordia University  
McGill University  
McMaster University  
Mount Allison University  
Queen's University  
Ryerson University  
Simon Fraser University  
The University of British Columbia - Okanagan  
The University of British Columbia - Vancouver  
The University of Toronto - Mississauga  
The University of Toronto - Scarborough  
The University of Toronto - St. George  
Trent University  
University of Alberta  
University of Calgary  
University of Lethbridge  
University of Ottawa  
University of Regina  
University of Victoria  
University of Waterloo  
University of Western Ontario  
Western University  
York University

## CHINA (PEOPLE'S REPUBLIC)

Fudan University  
Peking University

## FRANCE

ESMOD International

## HONG KONG (CHINA)

City University of Hong Kong  
Hong Kong Baptist University  
The Chinese University of Hong Kong  
The Education University of Hong Kong  
The Hong Kong Polytechnic University  
The Hong Kong University of Science and Technology  
The University of Hong Kong

## HUNGARY

Semmelweis University  
University of Debrecen Medical School and Health Science Center

## IRELAND

National University of Ireland, Galway  
Trinity College Dublin  
University College Cork  
University College Dublin  
University of Limerick

## JAPAN

International Christian University  
Keio University  
Sophia University  
The University of Tokyo  
Waseda University

## MACAO (CHINA)

Macau University of Science & Technology

## PHILIPPINES

Ateneo de Manila University - Quezon City  
De La Salle University

## SINGAPORE

Lasalle College of Arts  
Nanyang Technological University  
National University of Singapore  
Singapore Management University

## SOUTH KOREA

Korea University  
Seoul National University  
Sungkyunkwan University  
Yonsei University

## SWITZERLAND

Ecole Hoteliere de Lausanne

## UNITED KINGDOM

Cardiff University  
Coventry University  
Imperial College London  
King's College London  
London Metropolitan University  
Oxford Brookes University  
Queen Mary University of London  
Royal Northern College of Music  
The University of Edinburgh  
University College London  
University of Bath  
University of Birmingham  
University of Brighton  
University of Bristol  
University of Exeter  
University of Glasgow  
University of Kent  
University of Leeds  
University of Liverpool  
University of Manchester  
University of Nottingham  
University of Reading  
University of Southampton  
University of St Andrews  
University of the Arts London  
University of Warwick  
University of Winchester  
University of York

## UNITED STATES OF AMERICA

Arizona State University  
Babson College  
Bentley University  
Binghamton University  
Boston College  
Boston University  
Brandeis University  
Bridgewater State University  
Brigham Young University-Hawaii  
Brigham Young University-Idaho  
Brigham Young University-Utah  
California College of the Arts  
California Institute of the Arts  
California Lutheran University  
California State Polytechnic University-Pomona  
California State University, Los Angeles  
Carnegie Mellon University  
Case Western Reserve University  
Clarkson University  
Clemson University  
Colgate University  
College of William and Mary  
Colorado State University-Fort Collins  
Cornell University  
Curry College  
Dartmouth College  
Dickinson College  
Dixie State University  
Drew University  
Drexel University  
Eckerd College  
Elon University  
Emory & Henry College  
Emory University  
Fashion Institute of Design & Merchandising-San Francisco  
Foothill College  
Fordham University  
Framingham State University  
George Mason University  
George Washington University  
Illinois Institute of Technology  
Indiana University Bloomington  
Iowa State University  
Irvine Valley College  
James Madison University  
Juniata College  
Lehigh University  
Long Beach City College  
Louisiana State University and Agricultural & Mechanical College  
Loyola Marymount University  
Loyola University Chicago  
Lynn University  
Manhattan College  
Marietta College  
Maryland Institute College of Art  
McDaniel College  
Merrimack College  
Miami University  
Michigan State University  
New York School of Interior Design  
New York University  
Northeastern University  
Northern Arizona University  
Northwestern University  
Ohio State University  
Ohio University  
Old Dominion University  
Orange Coast College  
Oregon State University  
Pasadena City College  
Pennsylvania State University-Abington  
Pennsylvania State University-Main Campus  
Pepperdine University  
Pratt Institute  
Purdue University  
Rensselaer Polytechnic Institute  
Rhode Island College  
Rhode Island School of Design  
Ringling College of Art and Design  
Rutgers University-New Brunswick

San Diego State University  
San Francisco State University  
Santa Clara University  
Savannah College of Art and Design  
School of the Art Institute of Chicago  
School of Visual Arts  
Seattle Pacific University  
Seattle University  
Skidmore College  
Stony Brook University  
Suffolk University  
SUNY at Fredonia  
SUNY Buffalo State  
Susquehanna University  
Syracuse University  
Temple University  
Texas A&M University  
The New School  
University at Buffalo  
University of Arizona  
University of California-Berkeley  
University of California-Davis  
University of California-Irvine  
University of California-Los Angeles  
University of California-Riverside  
University of California-San Diego  
University of California-Santa Barbara  
University of California-Santa Cruz  
University of Chicago  
University of Colorado Boulder  
University of Connecticut  
University of Dallas  
University of Delaware  
University of Denver  
University of Houston  
University of Illinois at Chicago  
University of Illinois at Urbana-Champaign  
University of Lynchburg  
University of Mary Washington  
University of Maryland-Baltimore County  
University of Massachusetts-Amherst  
University of Massachusetts-Boston  
University of Massachusetts-Dartmouth  
University of Michigan-Ann Arbor  
University of Michigan-Flint  
University of Minnesota-Twin Cities  
University of Nebraska-Lincoln  
University of North Carolina at Chapel Hill  
University of Oregon  
University of Pittsburgh  
University of Portland  
University of Rhode Island  
University of Richmond  
University of Rochester  
University of San Francisco  
University of Southern California  
University of Virginia  
University of Washington-Tacoma Campus  
University of Wisconsin-Madison  
Ursinus College  
Valencia College  
Vanderbilt University  
Virginia Commonwealth University  
Virginia Polytechnic Institute and State University  
Virginia Tech  
Washington University in St. Louis  
Worcester Polytechnic Institute